

# PRODUCT INFORMATION

## REGUPOL EVERROLL ULTIMATE



### Product:

resilient floor covering made of PUR-bonded EPDM-granulates, with 100 % EPDM colour content

### Areas of Application:

Reception, Changing rooms, Cardio & machine training, Functional training, Free weight training & weightlifting, Crossfit, Indoor cycling, Group training/Aerobics, Yoga, Physio, Trampoline parks

### Consumer Product:

yes

### Features:

comfortable, robust, durable, sustainable, non-slip

### Standard Roll Dimensions:

Width: 1,250 mm

Length: 10m, 15m, 20m

Thicknesses: 4 mm, 6 mm, 8 mm, 10 mm, 12 mm

### Weight:

approx. 1.38 kg/m<sup>2</sup>/mm

### Standard Dimensions Puzzle Tiles:

Outer dimensions: 600 x 600 mm

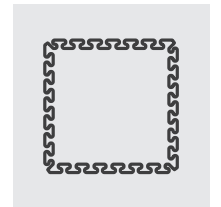
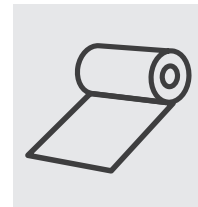
Thickness: 6 mm

### Slip Resistance:

R 10 based on DIN 51130 (02.2014) and ASR A1.5/1,2

### Impact Resistance:

> 21 Nm based on EN 14904 / EN 1517



### Certificate of sustainability:

EPD - Environmental Product Declaration

Cradle to Cradle Certified® is a registered trademark of the Cradle to Cradle Products Innovation Institute.

**REGUPOL everroll ultimate** is Cradle to Cradle Certified® at the Bronze level.

### Force Reduction:

up to 14 % based on EN 14904 / EN 14808

### Impact Sound Reduction:

Testing based on DIN EN ISO 10140

4 mm = 14 dB | 8 mm = 16 dB

### Fire Classification:

C<sub>fl</sub>-s1 based on EN 13501-1:2010-01 / EN9239-1:2010-11

### Colours:

approx. 27 standard colours, individual colours available on request

Further technical data is available on request.



# PRODUCT INFORMATION

## REGUPOL EVERROLL ULTIMATE



### REGUPOL everroll ultimate EDITION 4.0

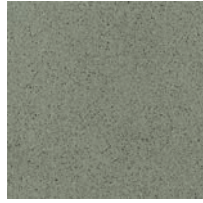
REGUPOL everroll ultimate meets the currently valid EU requirements on a consumer product.\*\*



Toronto [1053\*]



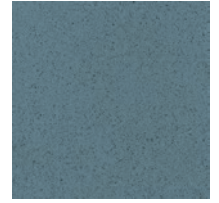
Manila [1105 | 1061\*]



Osaka [1187]



Lima [1380]



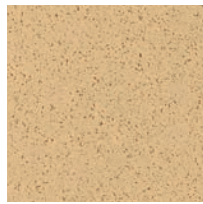
Boston [1112]



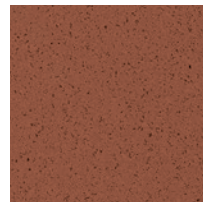
Seattle [1010]



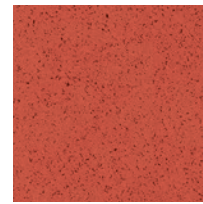
Galway [1009]



Yuma [1030]

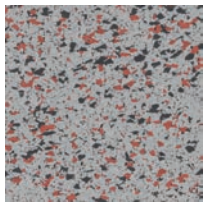


Lagos [1008]

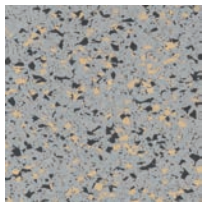


Marrakech [1238]

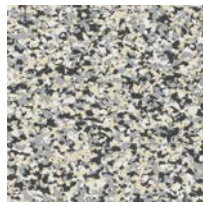
Edition 4.0 = brilliant colours and non-reflecting surface



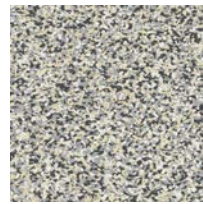
Jakarta [3003]



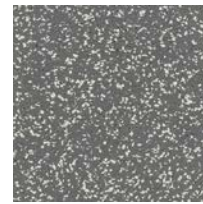
Kýpros [3002]



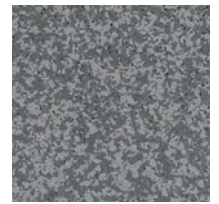
Calgary [1354 | 1056\*]



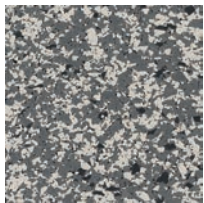
Vancouver [1355 | 1055\*]



Oslo [1208 | 1350\*]



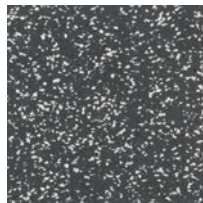
Tokyo [1198]



Paris [1085 | 1351\*]



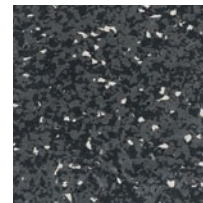
Berlin [2005 | 1352\*]



La Digue [1356 | 1155\*]



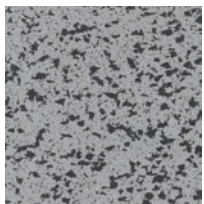
Gotland [1348 | 1188\*]



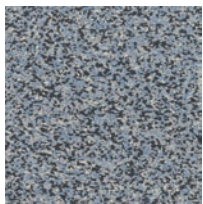
Mons [3138]



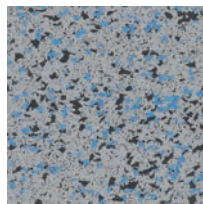
Pompeji [1194]



Island [3000 | 1353\*]



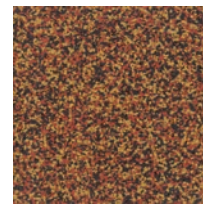
Nome [2004]



Helsinki [3001]



Kush [2001]



Goa [2000]

\* = increased light fastness  
Deviations from the colours shown are possible due to production batches and brochure print.

We reserve the right to make changes to the technical data. The test results and specified values are subject to a tolerance of +/- 10 %. Crucial for the up-to-date data is the information on our homepage [www.regupol.com](http://www.regupol.com)

\*\*Wherever direct, prolonged or repeated skin contact can be expected, the requirements for a Consumer Product currently valid within the EU must be met. Where this is not expected, your choice can be made from the entire decor portfolio. Those product fulfilling the requirements of a "Consumer Product", are explicitly marked as such. Should any questions arise that need clarification, contact your sales representative at our company directly or write to us using the contact form on our website [www.regupol.com](http://www.regupol.com).