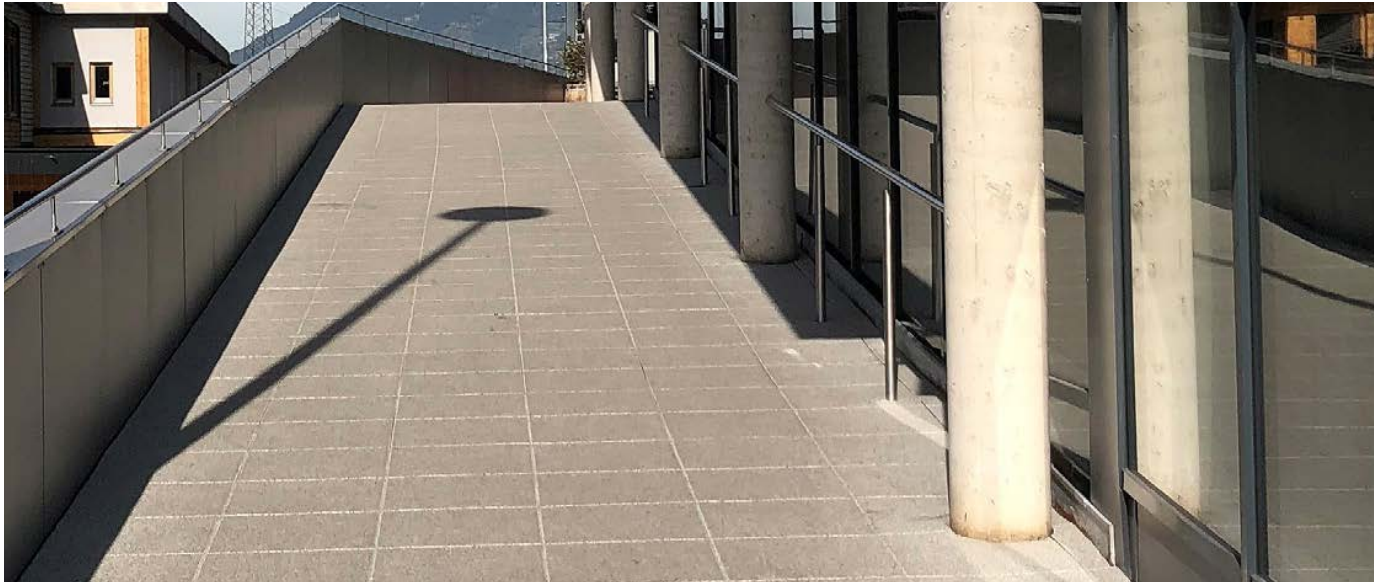


## REGUPOL EVERROLL ALPINE MT



### ultimate

**Product:**

tile product, with prefabricated **REGUPOL everroll ultimate** top layer made of PUR bonded EPDM granulates with 100 % EPDM colour content

**Application Areas:**

mountain and base stations

**Features:**

durable, sustainable, de-icing salt resistant, weatherproof, non-slip, quickly laid, trafficable

**Thickness:**

22 mm and 27 mm

**Standard Dimension:**

1,000 x 500 mm

**Weight:**

approx. 23.0 kg/m<sup>2</sup>, resp. approx. 26.0 kg/m<sup>2</sup>

**Slip Resistance:**

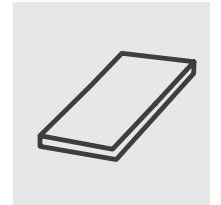
R 10 based on DIN 51130 (02.2014) and ASR A1.5/1,2

**Impact Resistance:**

> 21 Nm based on EN 14904 / EN 1517

**Force Reduction:**

up to 39 % based on EN 14904 / EN 14808



**Certificate of sustainability:**

Cradle to Cradle Certified® is a registered trademark of the Cradle to Cradle Products Innovation Institute.

**REGUPOL everroll alpine MT ultimate** is Cradle to Cradle Certified® at the Bronze level.

**Impact Sound Reduction:**

Testing based on DIN EN ISO 10140, 22 dB, as measured at 27 mm thickness

**Fire Classification :**

C<sub>fi</sub>-s1 based on EN 13501-1:2010-01 / EN9239-1:2010-11

**Salt Water Resistance:**

resistant based on DIN EN ISO 175

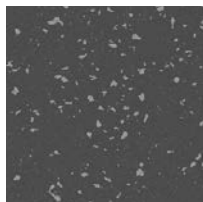
**Colours:**

two colours

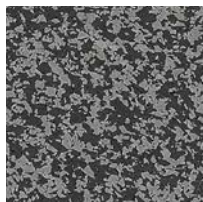
Further technical data is available on request.



**REGUPOL everroll alpine MT ultimate** EDITION 4.0



Orleans [1372]



Ottawa [1369]

Edition 4.0 = brilliant colours and nonreflecting surface

Deviations from the colours shown are possible due to production batches and brochure print.

We reserve the right to make changes to the technical data. The test results and specified values are subject to a tolerance of +/- 10 %. Crucial for the up-to-date data is the information on our homepage [www.regupol.com](http://www.regupol.com).